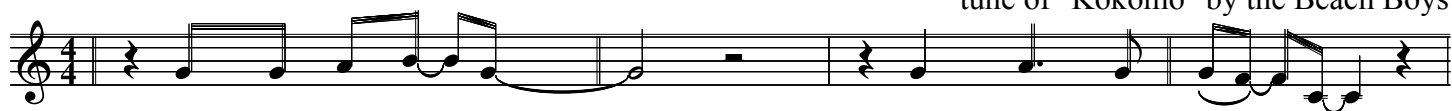


Ted Cruz

tune of "Kokomo" by the Beach Boys

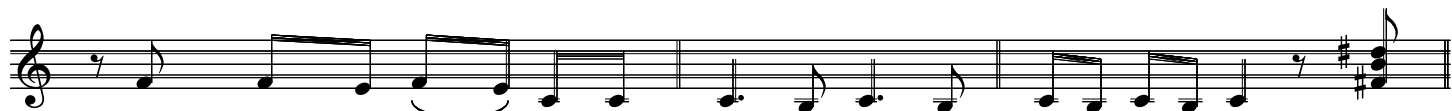


There's a man we know

And here's his mot - to



"When the go - in' gets tough That is the time to go



Way down to Mex - i - co"

Can-



- cun's where he's go - in' While back home it's snow - in' His



state's in dis - or - der So he's run - nin for the bor - der And



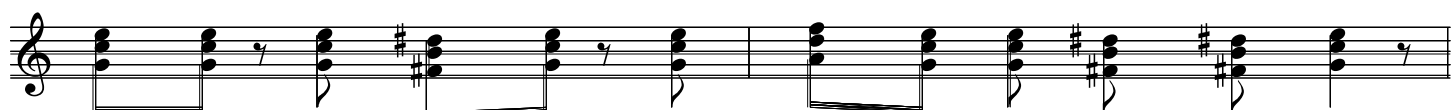
where he has cho - sen On - ly Dai - qui - ries are fro - zen But while



he's a - way we'll get the last laugh Af - ter all cause that's when we'll



build that love - ly bor - der wall. And



now that we know him The next time it starts snow - in



We'll be the win - ner Cause we won't let him re - en - ter To



him, our ad-vice is If there's a-noth-er cris - is "Don't pack light

and take more than just a car-ry--on, Cause the next time you try to

slip a-way Ya' bet-ter plan to stay!"

The image shows a musical score for a song. It consists of three staves of music. The first staff has a treble clef and a key signature of one sharp (F#). The melody is written in a simple, folk-like style. The lyrics are written below the first staff. The second staff continues the melody. The third staff ends with a double bar line. The lyrics are written below the third staff.